

# PALOMINO FIELDS PLAT - DIVISION V

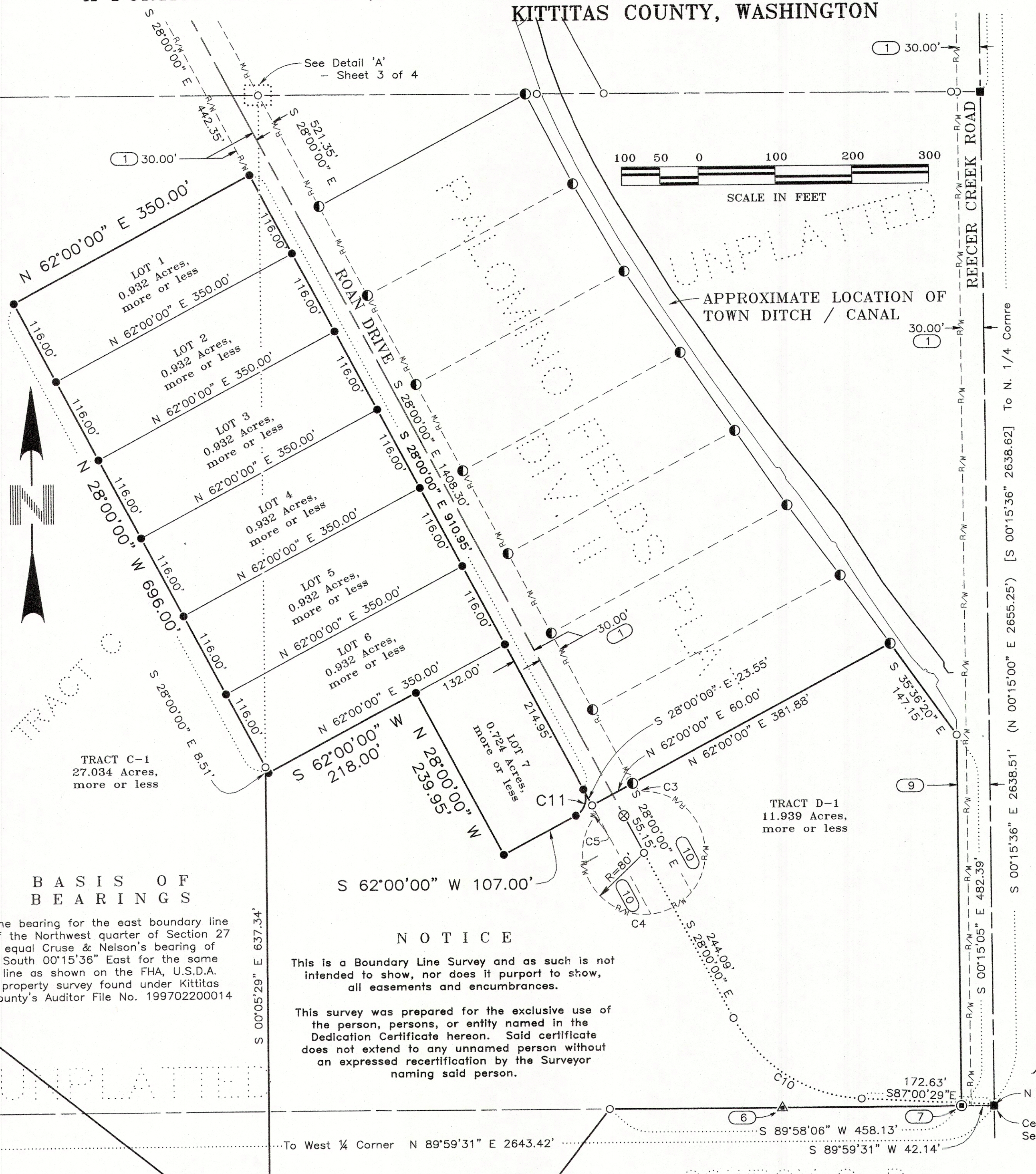
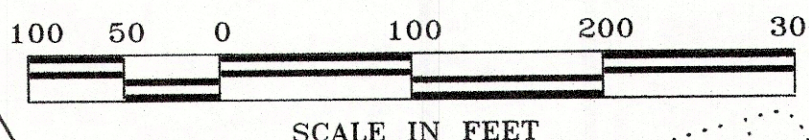
A REPLAT OF TRACT C AND TRACT D, PALOMINO FIELDS PLAT - DIVISION II  
 A PORTION OF THE SE 1/4 OF THE NW 1/4 OF SECTION 27, TOWNSHIP 18 NORTH, RANGE 18 EAST, W.M.  
 KITTITAS COUNTY, WASHINGTON

Receiving No. ....  
 LPF-19-00004  
 LP-07-00031

181827

### LEGEND

- 5/8 - inch iron pin with surveyor's cap marked "LS 12491" monument set July, 2019
- ⊕ 3 - inch brass cap monument found September, 2016
- 5/8 - inch aluminum surveyor's cap monument stamped "Kittitas County" found September, 2016
- ⊗ 2 - inch brass cap monument stamped "LS 12491" grouted in a 2-inch pipe set in a monument case, found July, 2019.
- △ 5/8 - inch iron pin with surveyor's cap stamped "12491" monument found September 2016
- ▲ 5/8 - inch iron pin with surveyor's cap stamped "18092" monument found September 2016
- ⊙ 5/8 - inch iron pin with no surveyor's cap monument found September 2016
- 1 - inch iron pin with no surveyor's cap monument found September 2016
- ⦿ 5/8 - inch iron pin with surveyor's cap stamped "12491" property corner monument found July 2019
- Railroad spike monument found September 2016
- ◆ 5/8 - inch iron pin with surveyor's cap marked "LS 49273" monument set July 11, 2017
- ▲ 5/8 - inch iron pin with surveyor's cap marked "LS 12491" monument found February, 2019
- Calculated point only - no monument found or set
- ( ) Previously recorded information from Preston Short Plat, Short Plat A-22, and shown on drawing as "Kittitas Co. Short Plat No. 77-12", as found under Kittitas County's AFN 418140
- [ ] Previously recorded information from Record of Survey drawing as found under Kittitas County's AFN 199702200014
- < > Previously recorded information from Record of Survey drawing as found under Kittitas County's AFN 199702200014
- ] [ Previously recorded information from Record of Survey drawing as found under Kittitas County's AFN 199702200014
- > < Previously recorded information from Statutory Warranty Deed found under Kittitas County's AFN 416766
- # Note - See Sheet 3 of 4



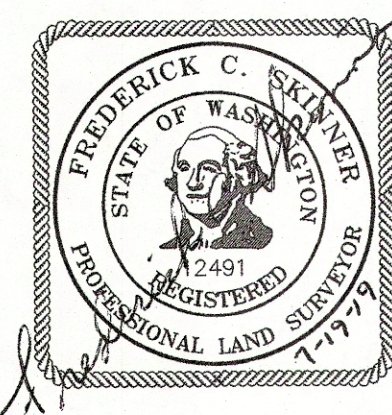
### BASIS OF BEARINGS

The bearing for the east boundary line of the Northwest quarter of Section 27 equal Cruse & Nelson's bearing of South 00°15'36" East for the same line as shown on the FHA, U.S.D.A. property survey found under Kittitas County's Auditor File No. 199702200014

### NOTICE

This is a Boundary Line Survey and as such is not intended to show, nor does it purport to show, all easements and encumbrances.

This survey was prepared for the exclusive use of the person, persons, or entity named in the Dedication Certificate hereon. Said certificate does not extend to any unnamed person without an expressed recertification by the Surveyor naming said person.



<b>INSTRUMENT USED</b>	<b>INDEXING DATA</b>
Trimble R10 GPS Receivers	
Traverse Closure Meets Standards Per WAC 332-130-090	S27 T18N R18E
<b>WESTERN PACIFIC ENGINEERING &amp; SURVEY</b>	
A TERRA DEVELOPMENT SERVICES CORPORATION 1328 E. Hunter Place, Moses Lake, Washington T:(509)765-1023 F:(509)765-1298 Services in Washington and Idaho	
<b>LCU, INC.</b>	
Surveyed by LMH	Scale 1" = 100'
Drawn by Tml/FCS	Sheet 2 of 4
Checked by FCS	Project No. 18146

File --- Project Desc.: S:\18146\18146 DIV 5\18146 MP5-pro (Plotted - Jul 19, 2019)